

**800x
1600 mm**



ROCKER
COLLECTION

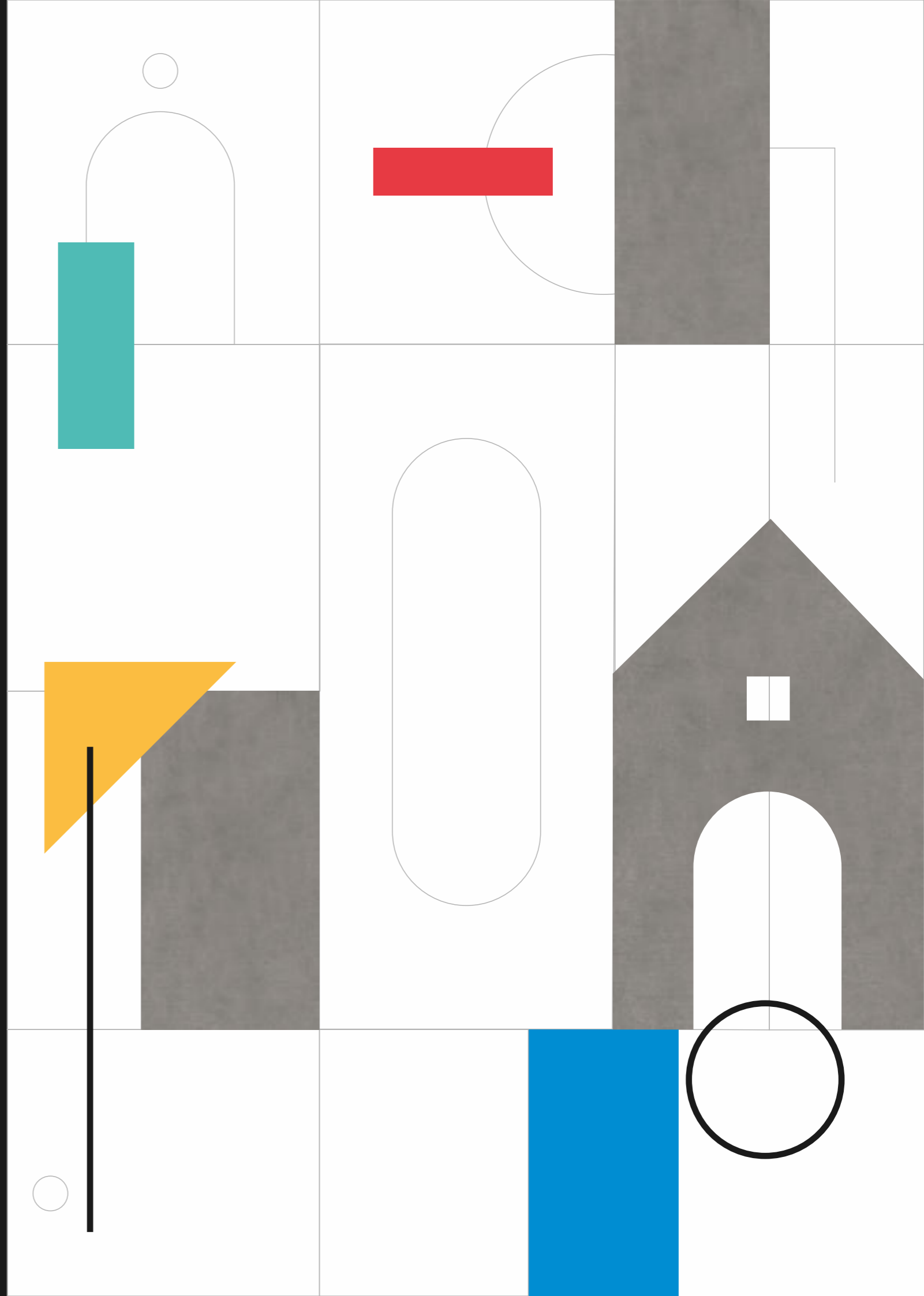
***NATURE
IS OUR HOME***





HOMIE OF CAR- VING

Mix Styles Of Carving





**A
SHAD
DOW
OF
MORE
FADES**

**MIXING OF FIVE
ELEMENT OF
THE SURFACE**

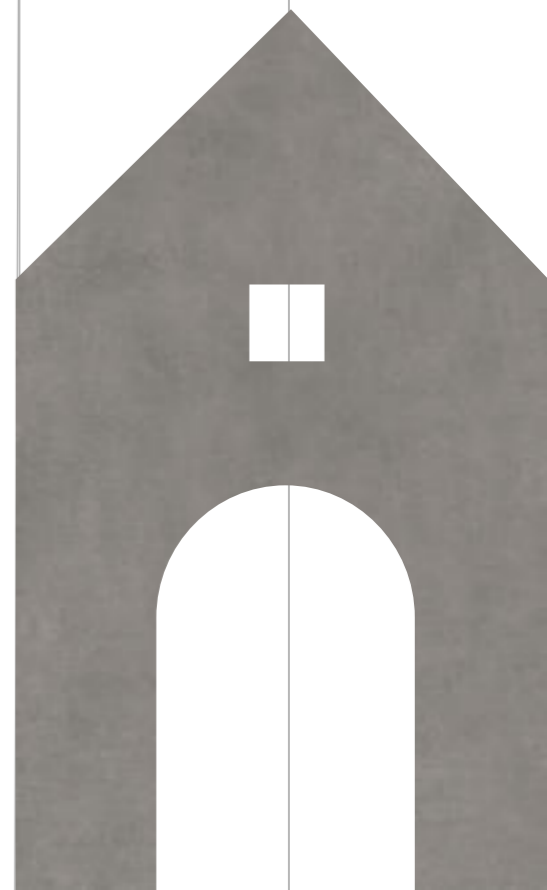
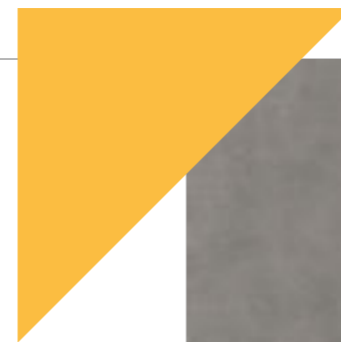
COMBINATION
OF ELEMENT
& SURFACE

**A
NEW
PHI
LO
SO
PHY**

FOR CERAMICS

**CAR-
VING**

STRUCTURE OR OBJECT,
FROM TOWN PLANNING,
URBAN DESIGN.



FOSTER SERIES



BIANCO



GRIS



GREY



NERO



BEIGE



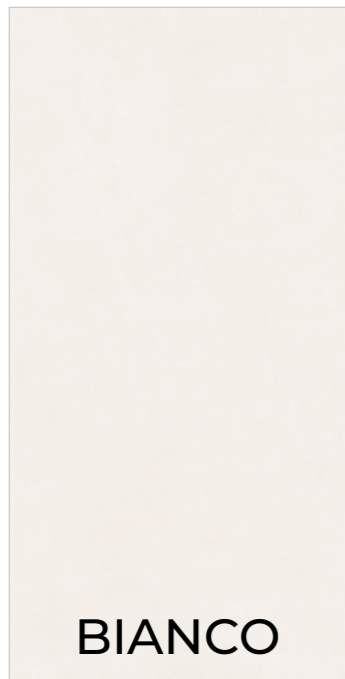
TAUPE



GREEN

PRODUCTS INDEX

ROCK LINEN SERIES



BIANCO



GREY



GRIS



MINT



SAGE



BEIGE



SEPIA





FOSTER BIANCO

**800x1600 mm
Carving**

04 - Random

Touch for Virtual



ROCKER
COLLECTION







FOSTER GRIS

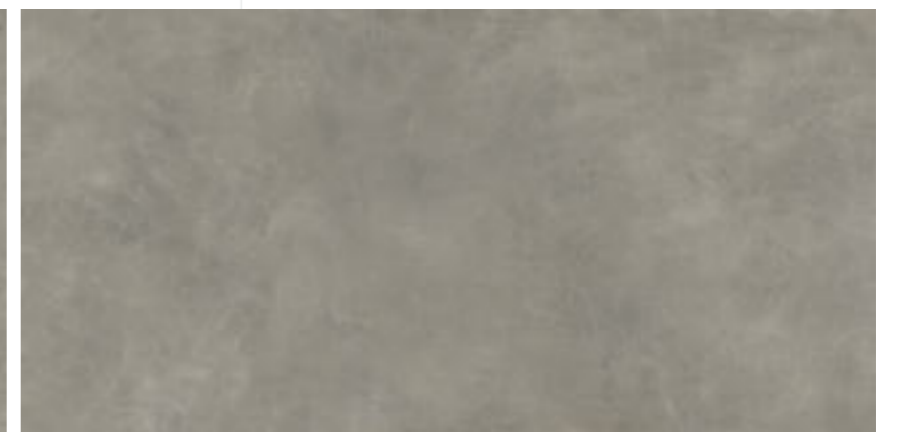
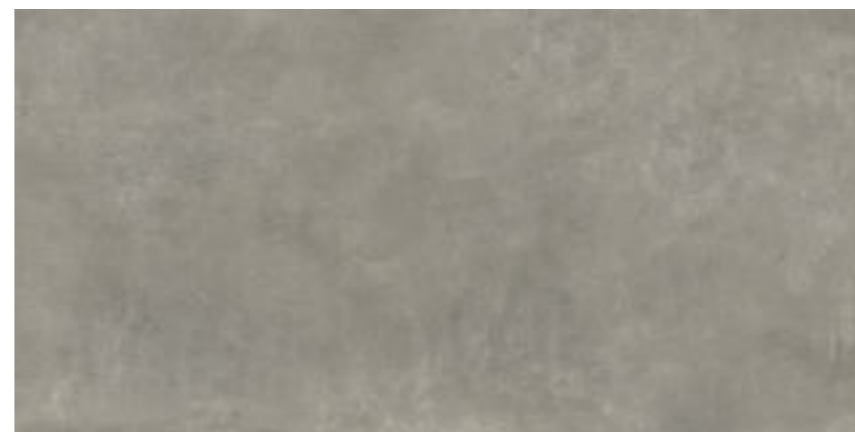
**800x1600 mm
Carving**

04 - Random

Touch for Virtual



ROCKER
COLLECTION







FOSTER GREY

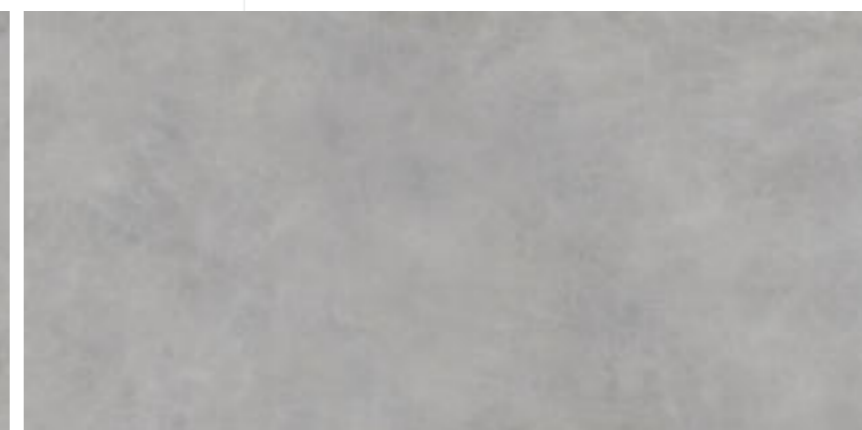
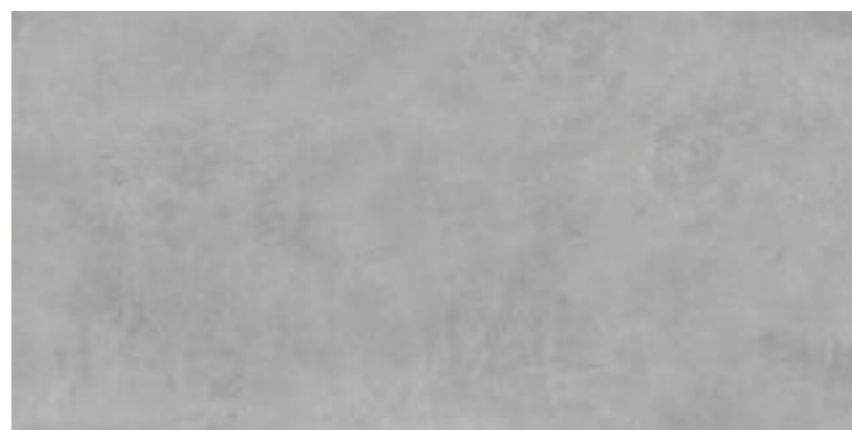
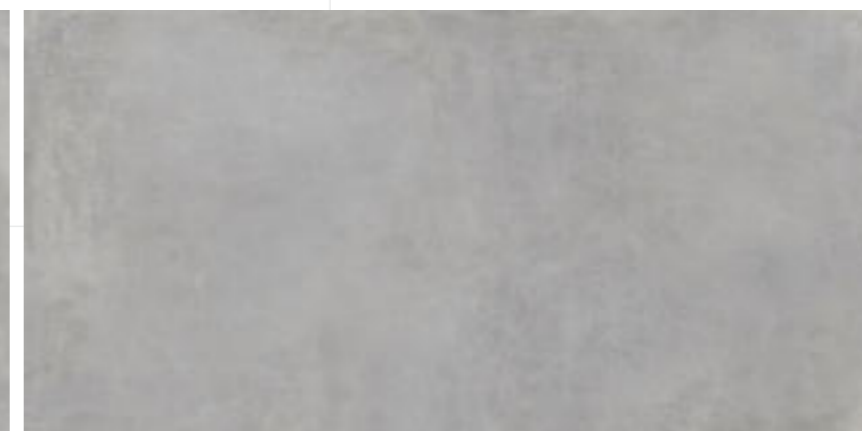
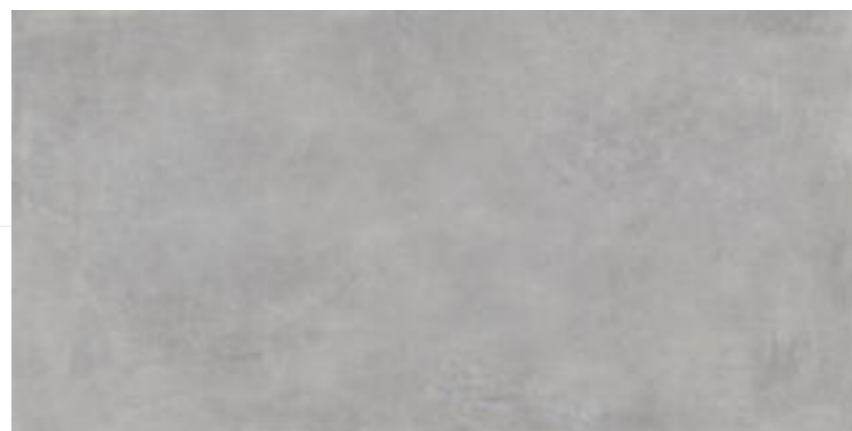
**800x1600 mm
Carving**

04 - Random

Touch for Virtual



ROCKER
COLLECTION







FOSTER NERO

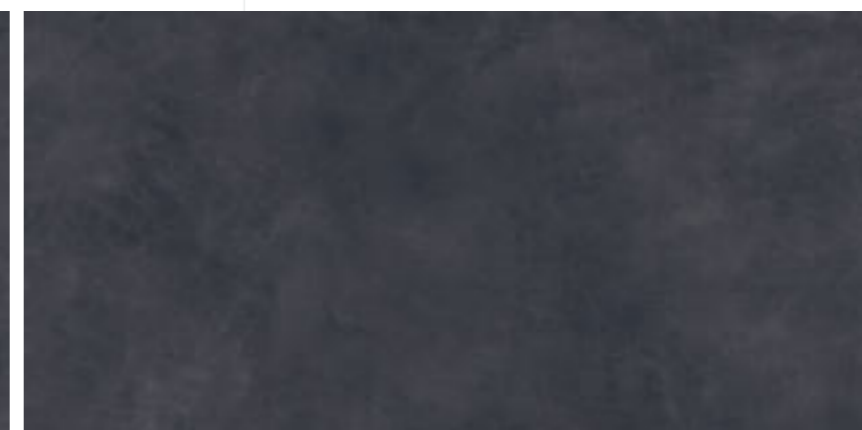
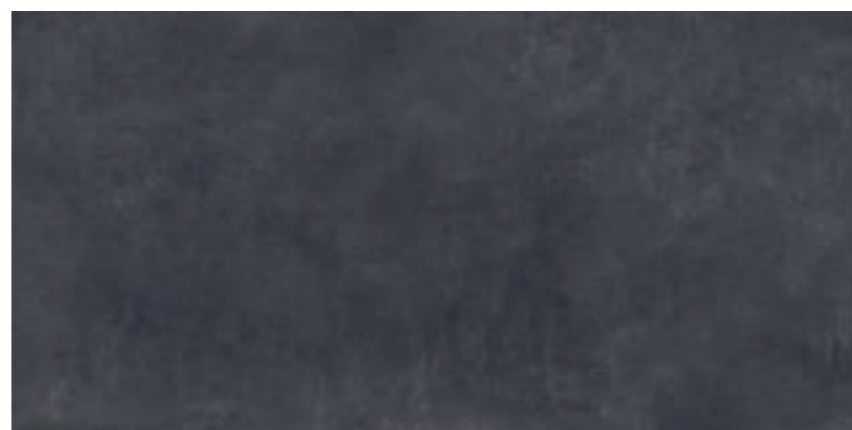
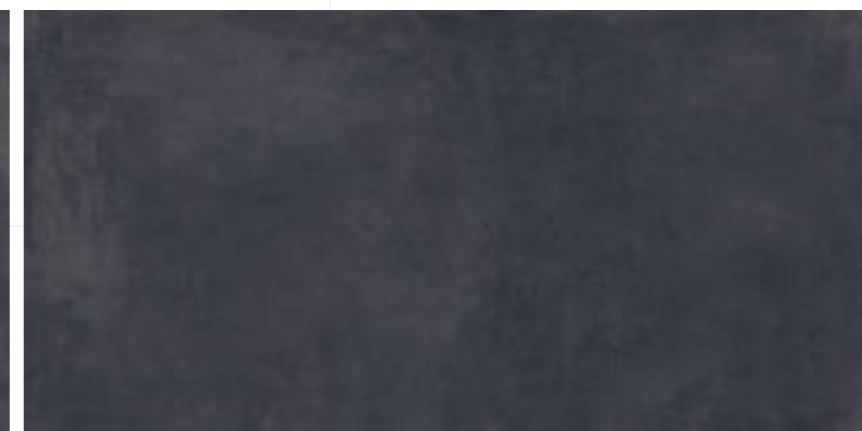
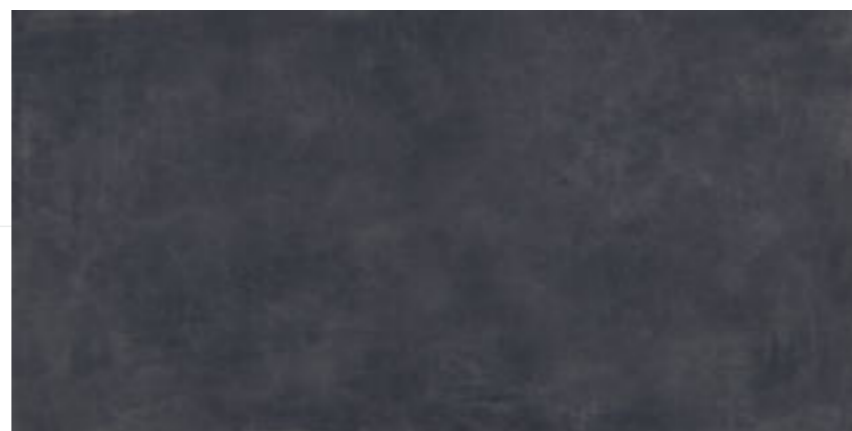
**800x1600 mm
Carving**

04 - Random

Touch for Virtual



ROCKER
COLLECTION





Mandarin Orientalc



FOSTER BEIGE

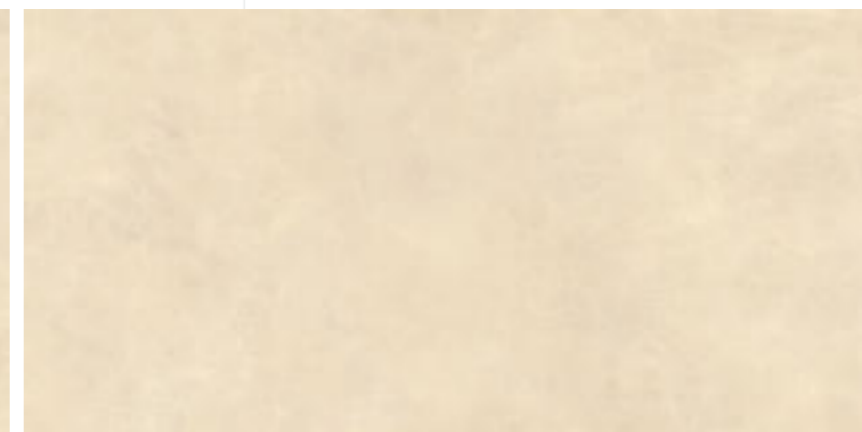
**800x1600 mm
Carving**

04 - Random

Touch for Virtual



ROCKER
COLLECTION







FOSTER TAUPE

**800x1600 mm
Carving**

04 - Random

Touch for Virtual



ROCKER
COLLECTION







FOSTER GREEN

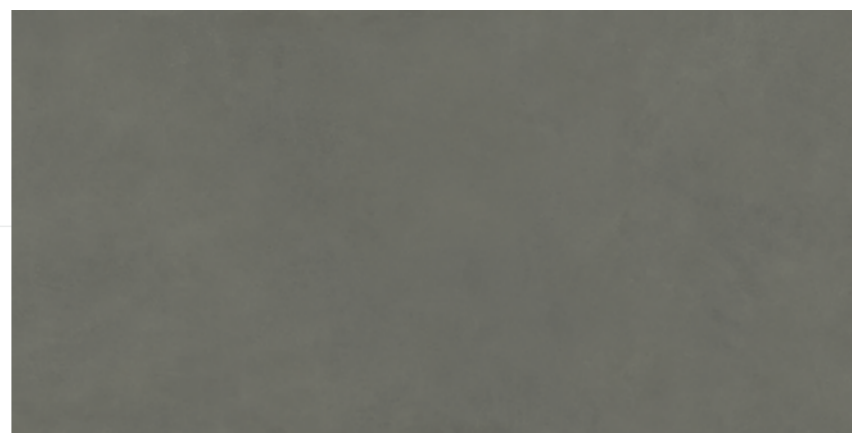
**800x1600 mm
Carving**

04 - Random

Touch for Virtual



ROCKER
COLLECTION







ROCK LINEN BIANCO

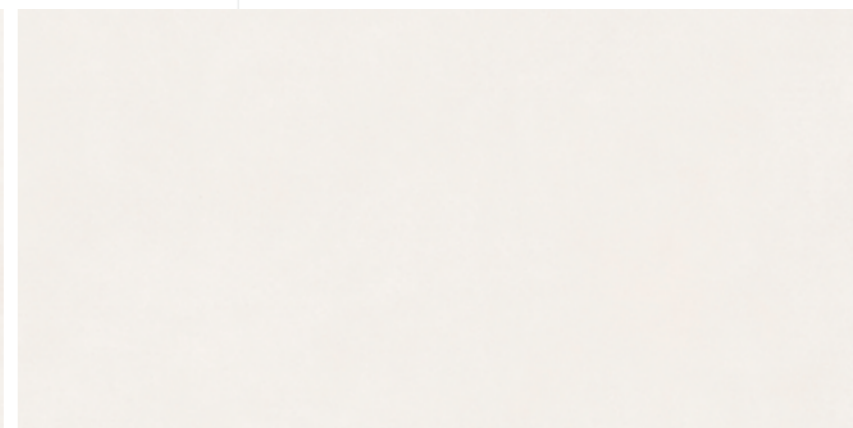
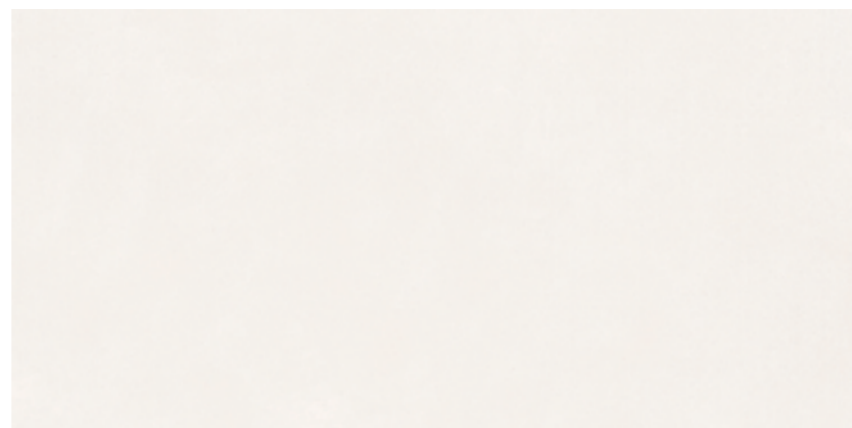
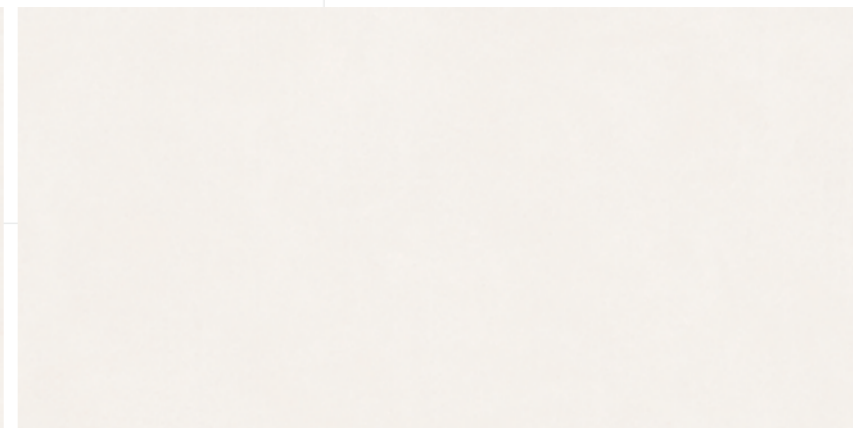
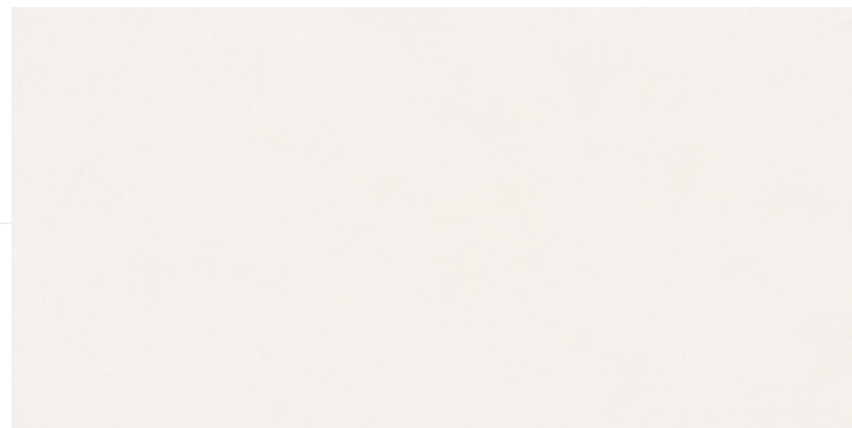
**800x1600 mm
Carving**

04 - Random

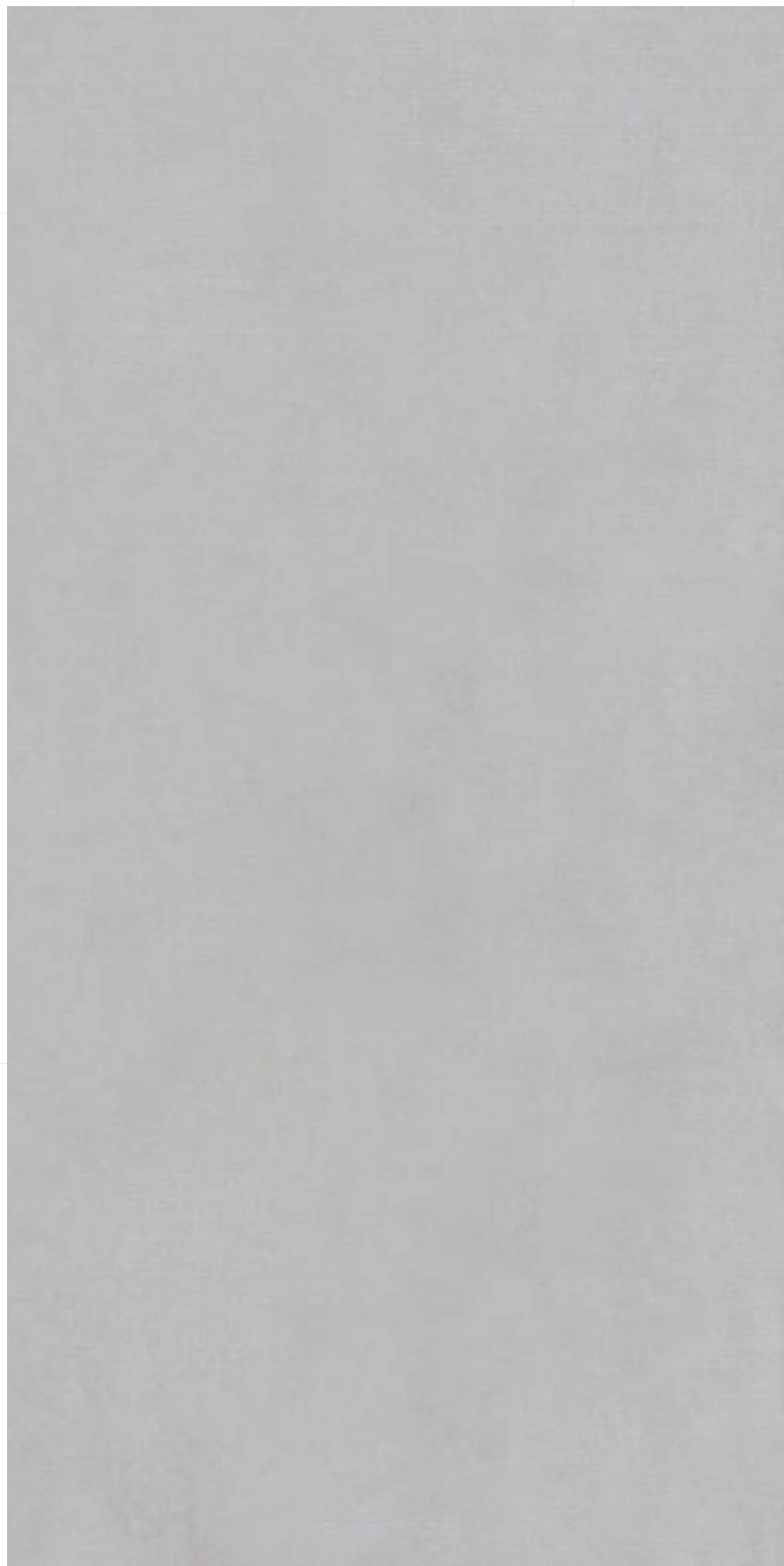
Touch for Virtual



ROCKER
COLLECTION







ROCK LINEN GREY

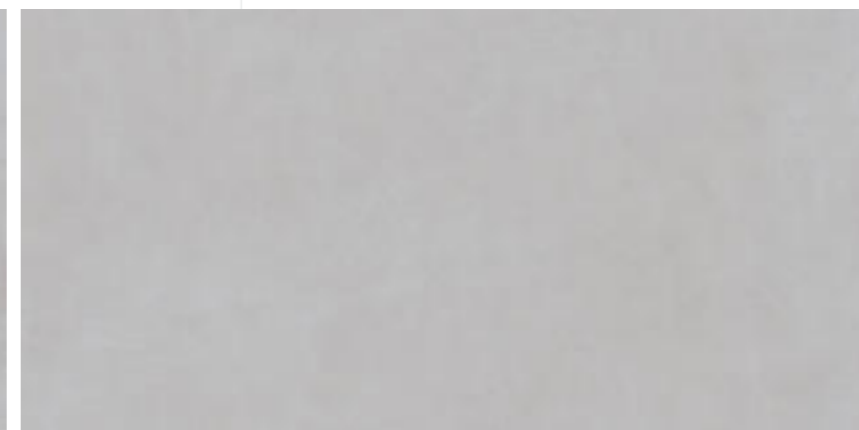
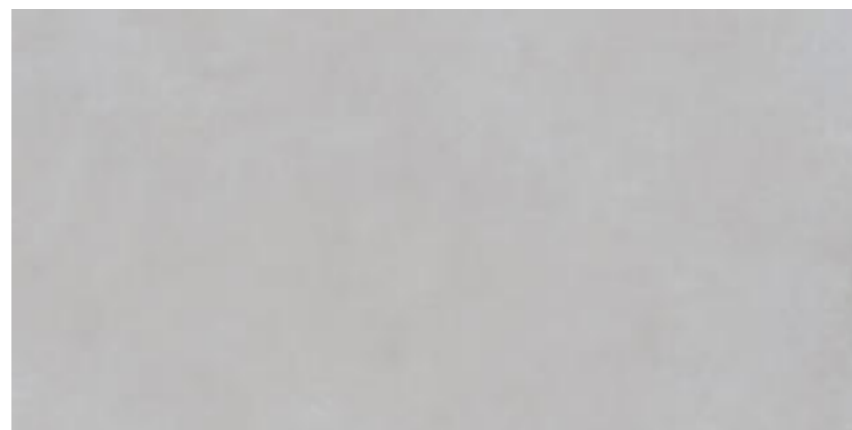
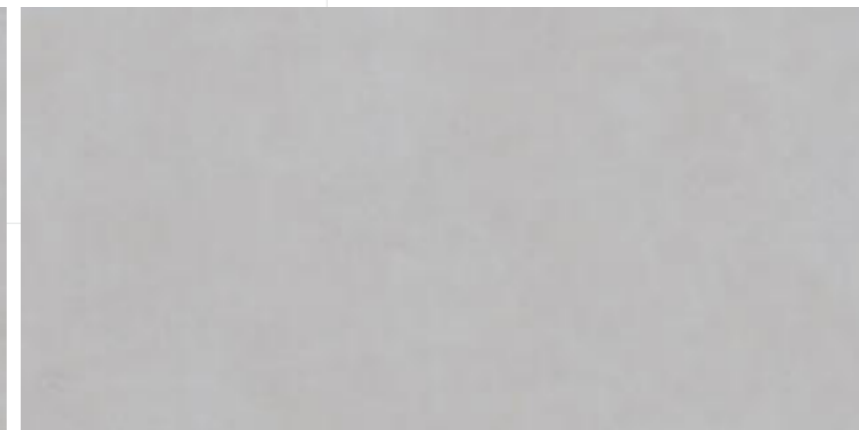
**800x1600 mm
Carving**

04 - Random

Touch for Virtual



ROCKER
COLLECTION







ROCK LINEN GRIS

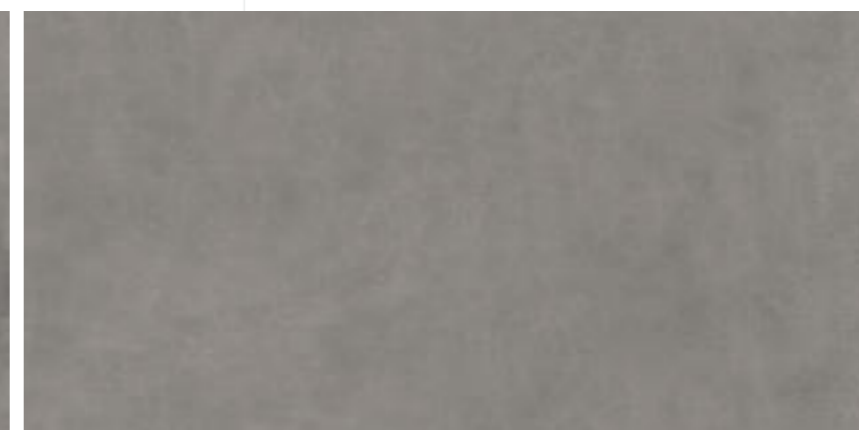
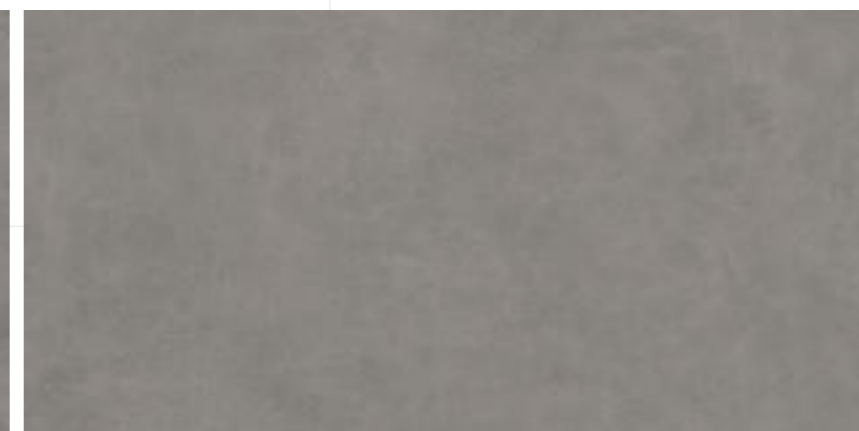
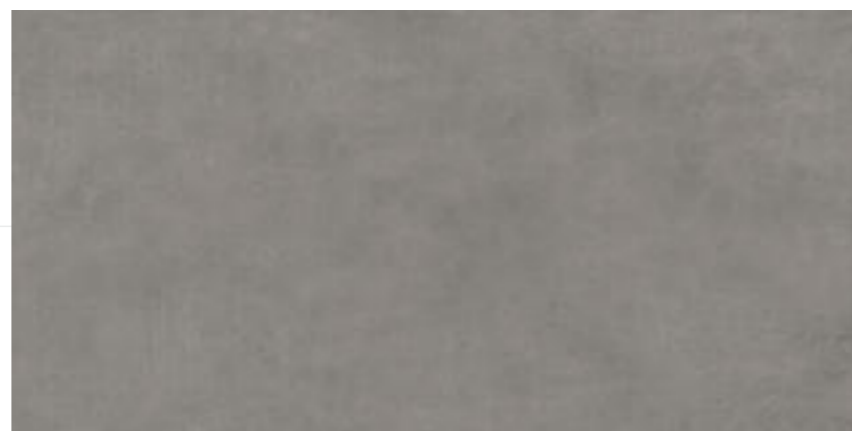
**800x1600 mm
Carving**

04 - Random

Touch for Virtual



ROCKER
COLLECTION







ROCK LINEN MINT

**800x1600 mm
Carving**

04 - Random

Touch for Virtual



ROCKER
COLLECTION







ROCK LINEN SAGE

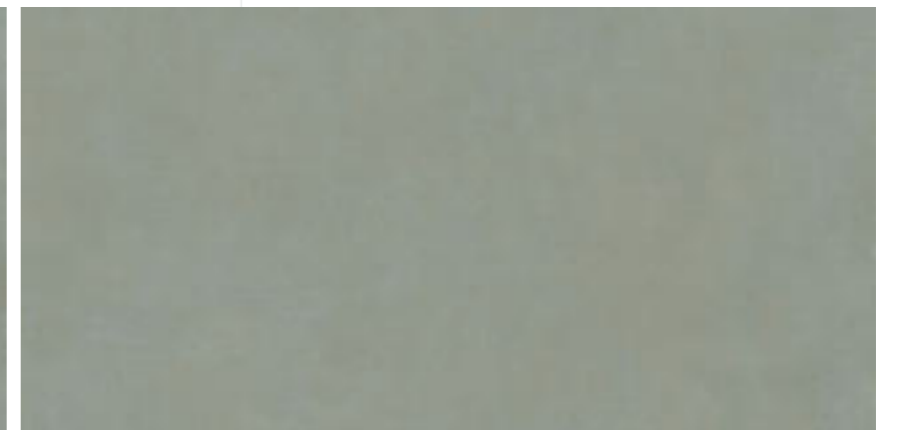
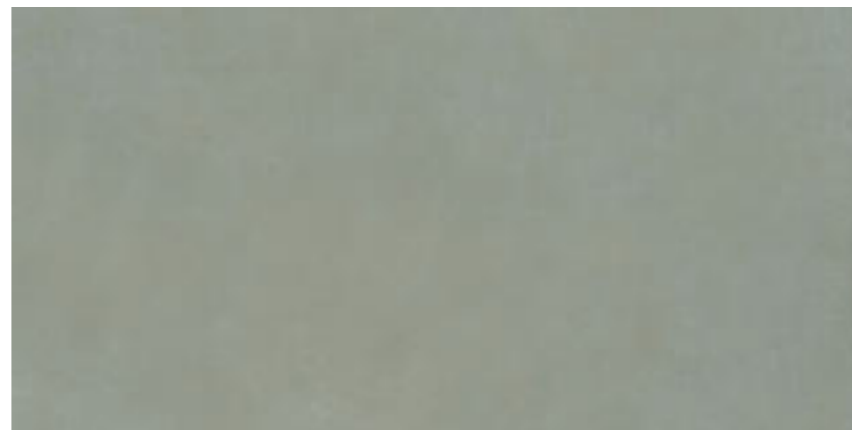
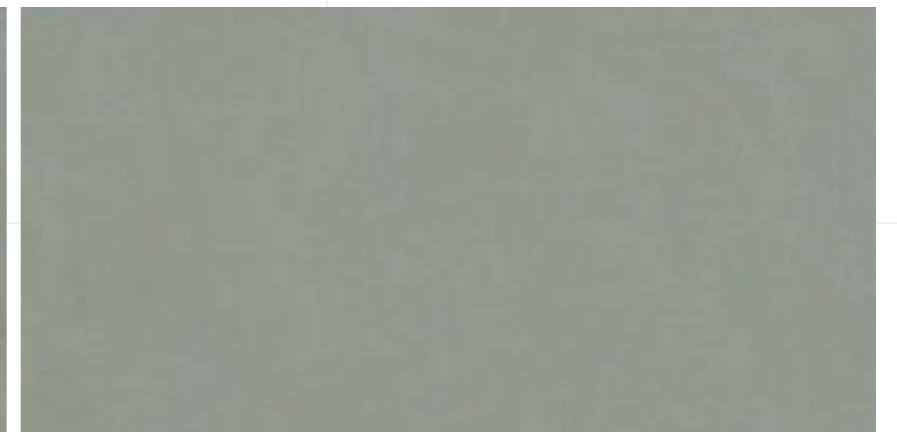
**800x1600 mm
Carving**

04 - Random

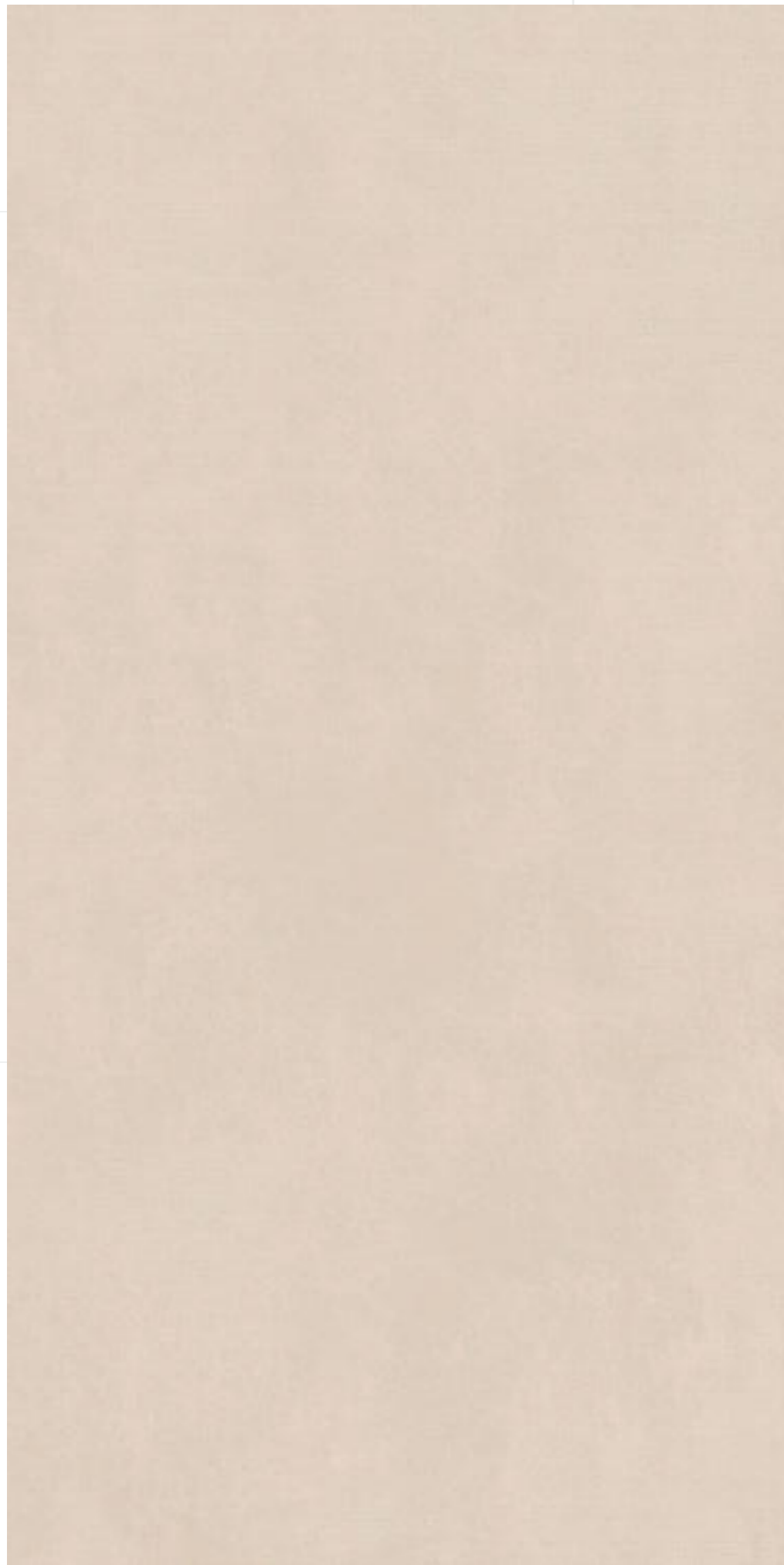
Touch for Virtual



ROCKER
COLLECTION







ROCK LINEN BEIGE

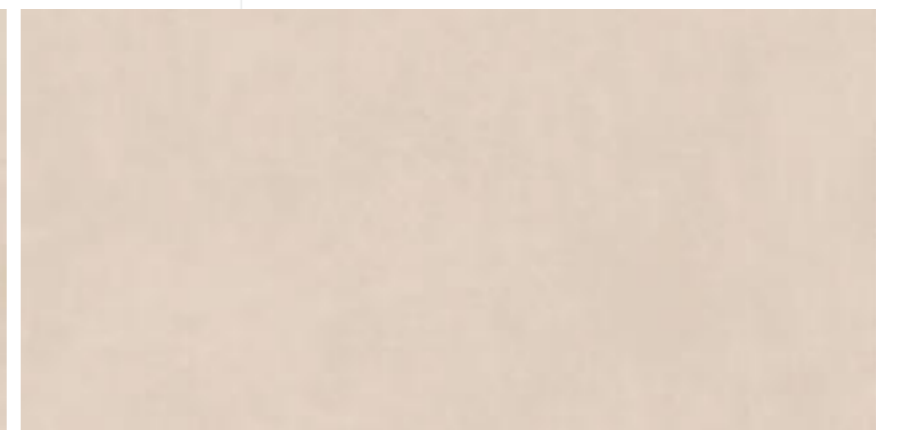
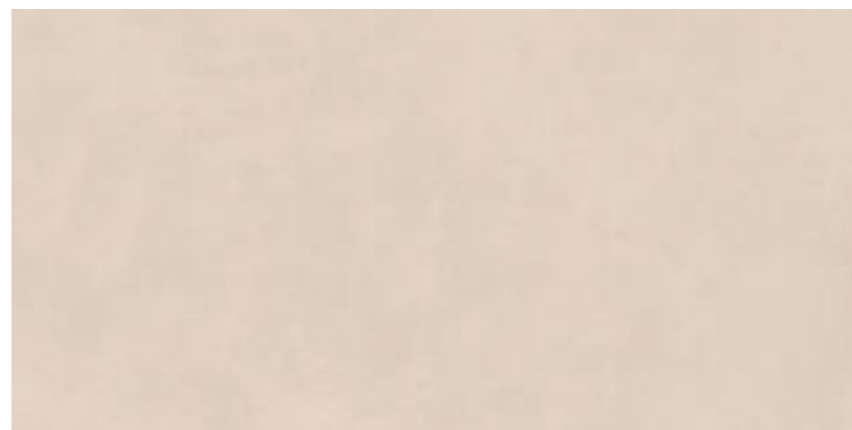
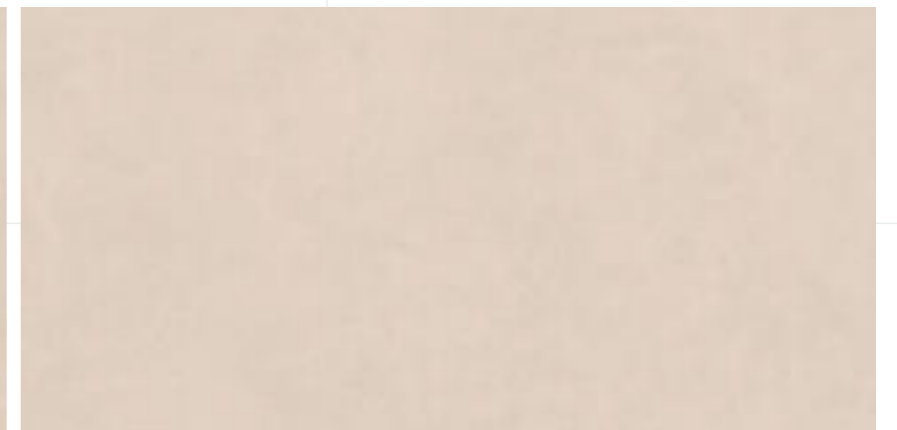
**800x1600 mm
Carving**

04 - Random

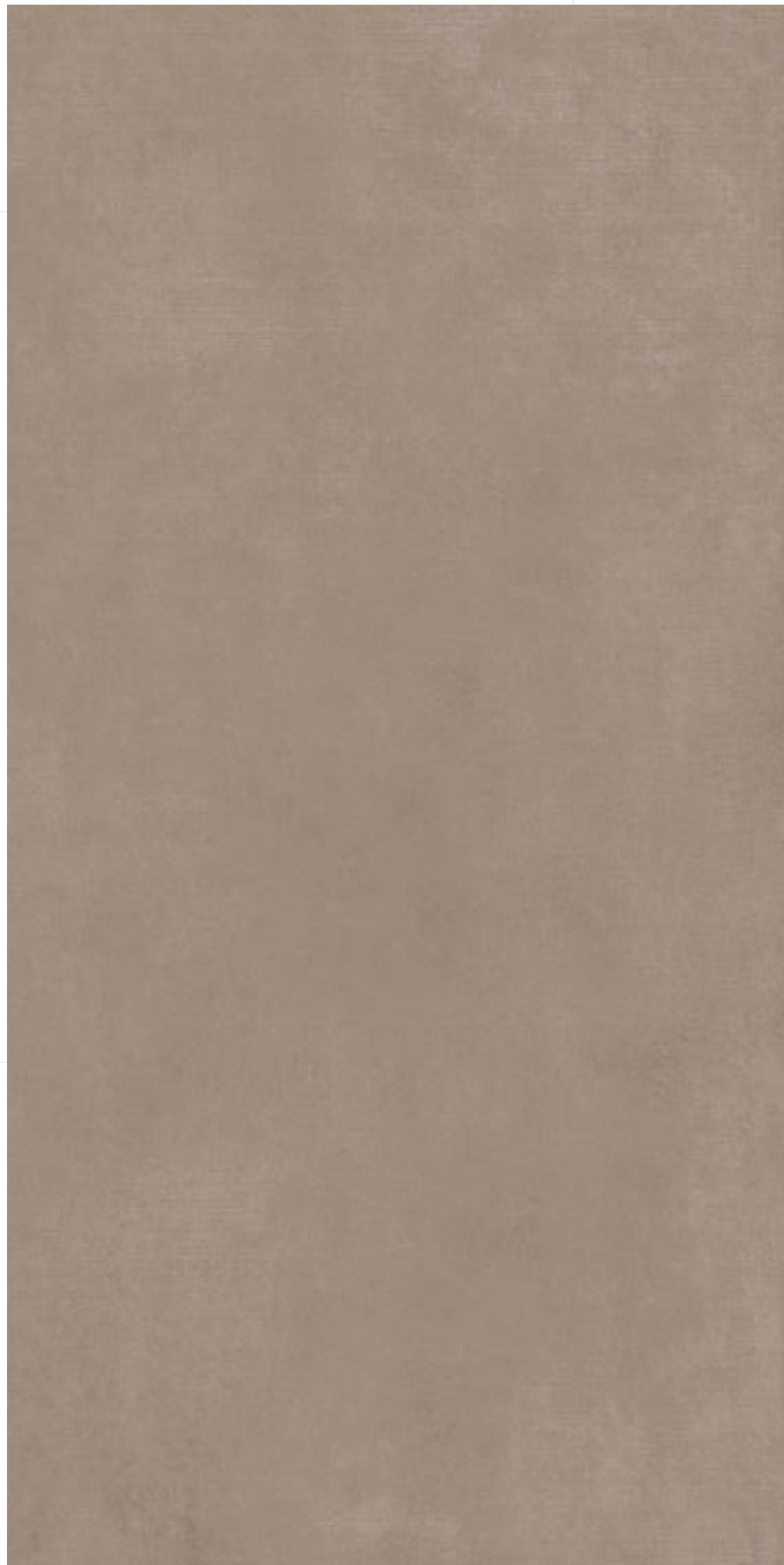
Touch for Virtual



ROCKER
COLLECTION







ROCK LINEN SEPIA

**800x1600 mm
Carving**

04 - Random

Touch for Virtual



ROCKER
COLLECTION



Technical Specification

CHARACTERISTICS	STANDARD AS PER ISO-13006/En14411 GROUP	VALUES	TEST METHOD
REGULATORY PROPERTIES			
Deviation in Lenth & Width	0.50%	0.20%	ISO - 10545-2
Deviation in Thickness	0.50%	0.50%	ISO - 10545-2
Straightness of Sides	0.50%	0.20%	ISO - 10545-2
Rectangularity	0.50%	0.20%	ISO - 10545-2
Surface Flatness	0.50%	0.20%	ISO - 10545-2
Color Difference	Unaltered	No Change	ISO - 10545-16
Glossiness	As per Mfg.	>90%	Glossmeter
STRUCTURAL PROPERTIES			
Water Absorption	<0.05%	<0.05%	ISO - 10545-3
Apparent Density	>2.00 g/cc	>2.10 g/cc	DIN 51082
MASSIVE MECHANICAL PROPERTIES			
Modulus of Repture	Min 35N/MM2	Min 40N/MM2	ISO - 10545-4
Breaking Strength	Min. 1300 N	Min. 2000 N	ISO - 10545-4
Impact Resistance	As per Mfg.	Min. 0.55	ISO - 10545-5
SURFACE MECHANICAL PROPERTIES			
Surface Abrasion Resistance	As per Mfg.	Min. class 3	ISO - 10545-7
Moh's Hardness	As per Mfg.	Min. class 4	EN 101
THERMO HYGROMETRIC PROPERTIES			
Frost Resistance	No Damage	No Damage	ISO - 10545-12
Thermal Shock Resistance	No Damage	No Damage	ISO - 10545-09
Moisture Expansion	Nil	Nil	ISO - 10545-10
Thermal Expansion	Max 9.0x10 ⁻⁶	Max 6.5x10 ⁻⁶	ISO - 10545-08
Crazing Resistance	As per Mfg.	Min 10 Cycle	ISO - 10545-11
CHEMICAL PROPERTIES			
Chemical Resistance	No Damage	No Damage	ISO - 10545-13
Stain Resistance	Resistant	Resistant	ISO - 10545-14
SAFETY PROPERTIES			
Slip Resistance	As per Mfg.	>0.40	ISO - 10545-17
Fire Resistance	As per Mfg.	Fire Proof	N.A.

Packing Detail

SIZE (in mm)	THICKNESS APPROX	PIECES / PER BOX	COVERAGE AREA IN SQ. FT	BOX WEIGHT (APPROX.)
800X1600	9 MM	2	27.55	52 KG